

# ENOVIA V6 Upgrade

## Case Studies-1 & 2



## V6 Upgrade Objective

Upgrade the PLM application on a supported version level of DASSAULT ENOVIA V6R20xx

Take advantage of new features in V6

Comply with new versions of integrated systems

Optimization of the access control

Restructure the existing customization for better manageability and smooth future upgrades

Take benefit of full text search with Exalead



## V6 Upgrade Challenges

1. Heavy customization of OOTB functionalities in source system

2. Change in OOTB Data Model during merging/split of OOTB Centrals

3. unstructured upgrade methodology

4. Conflict in new OOTB functionalities and existing/expected business processes

5. Manual and lengthy deployment processes which creates overhead in development cycle



Reference Case Study - 1  
Ematrix 10.5 to V6  
Upgrade

# Project Highlights

ENOVIA  
Version 10.5 +  
DSC 10.6

V6  
Upgrade

ENOVIA  
V6R2012

**Customer:** Manufacturer

**Applications:** Engineering Central, Designer Central, Team Central CATIA V5 Integration

**Duration:** 5 Months

**Total Effort:** 130 Man-days

**Key Challenges:** 5 FCS Sites, CATIA V5 Integration

# Key activities / Highlights

- CATIA V5 Integration upgraded and new configurations from DSC V6 are adapted
- New Search pages introduces
- Restructured old code with ENOVIA best practices
- Routing Automation is upgraded with V6 data structure
- Project executed with Onsite-Offshore Model with collaboration and deployment tools like Mantis, SVN, Ant, MxUpdate


# Challenges Faced



- Configuration Parameters of **Designer Central** is changed drastically between ENOVIA 10.5.x to V6R2012




- **Licensing model** was not in 10.5 but was there in V62012.



- Lots of customization around ECO and Part Process and adoption of that customization in latest OOTB Release was a challenge

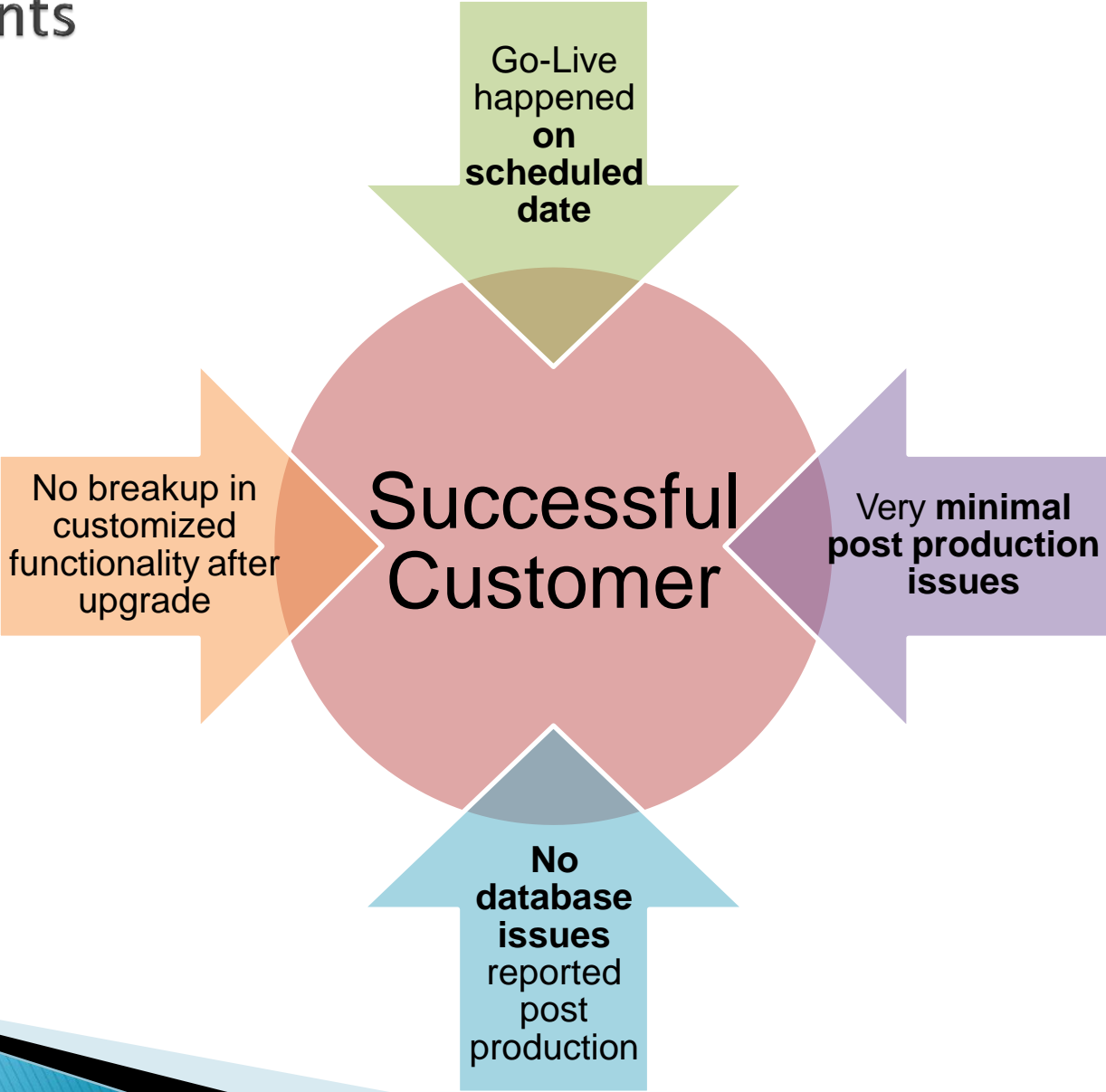


- New UI adoption on lots of customized code.



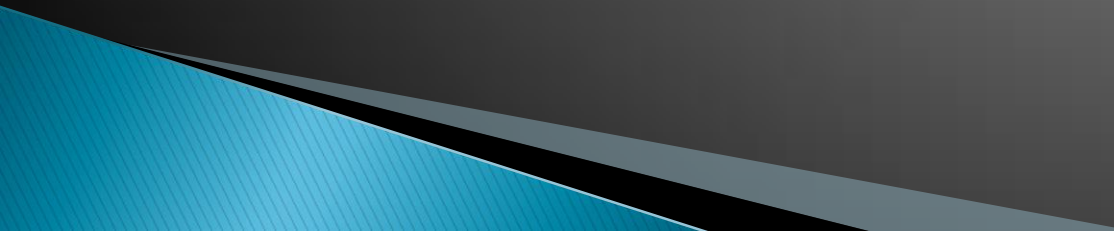
- **No Documentation was available** on Customization done over 10.5 so it was a challenge to covert customization with latest release functionality.

# Achievements





Reference Case Study – 2  
Ematrix 10.8 to V6  
Upgrade



ENOVIA  
Version  
10.8

V6  
Upgrade

ENOVIA  
V6R2012

**Customer:** Thermal Power

**Applications:** Engineering Central, A& D Accelerator, Variant Configuration Central, Designer Central, MSOffice Integration, Program Central

**Duration:** 7 Months


**Total Effort:** 280 Man-days

**Key Challenges:** Exalead Implementation, License Mapping for 300 Users, Variant Configuration Central is largely restructured in Product


# Key activities / Highlights

- New Exalead based full text searched were implemented.
- Complete architecture and tuning of Hardware setup for better performance.
- Performance tuning of database and application server JVM
- RPT – Reporting Module was introduced and implemented in V6
- Customized training material was developed with upgraded V6 environment and business processes.
- Training delivered to 23 end users at 3 locations.
- 2 mock-up round of Go-Live done with validation of data by business users
- Effort burn down report based project progress reporting during entire project


# Challenges Faced



Product central in 10.8 version was split into Product Line, Requirement Central and Variant Configuration Central. Because of this split, there was lot of Schema restructuring.



Heavy custom JSPs for Engineering WF management, Configuration management and data management



Database character set was migrated to comply with Exalead compliance. It involved identification of affected data and truncating as required.



Ensuring Existing business processes are still remain same for end users.

# Achievements

